

NO.	DATE	BY	REVISION / REMARKS
	JUNE 2019	J.L.	GENERAL REVISION

STD DETAILS

SHEET NUMBER 0 OF 0

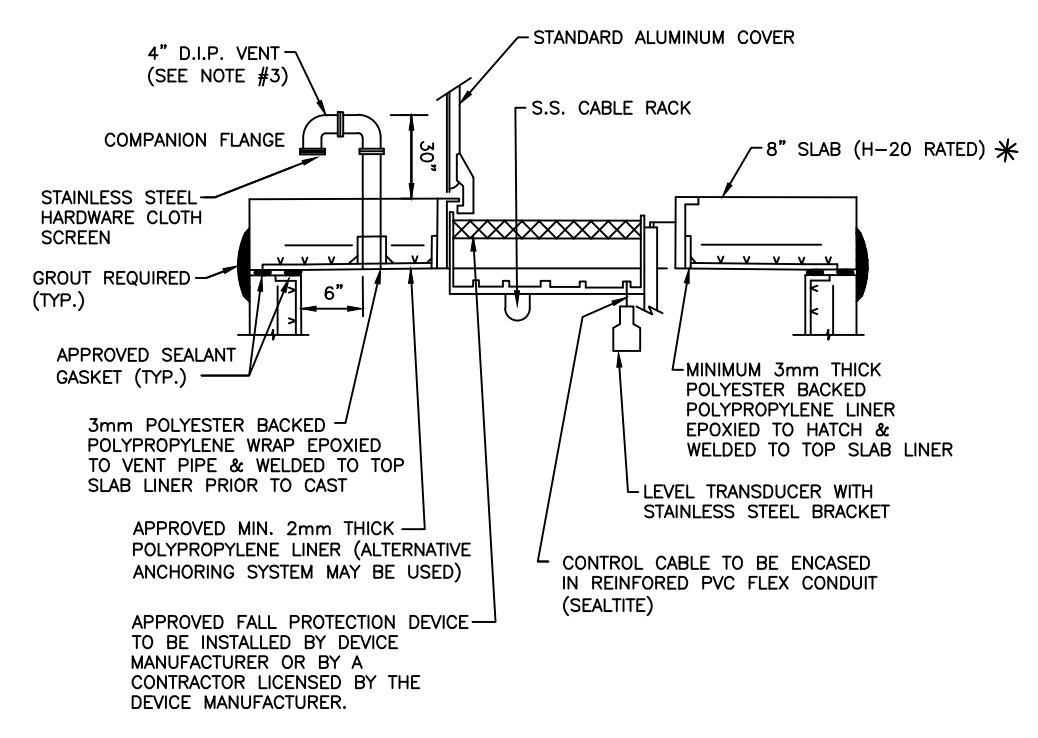
SEAL

THIS SPACE INTENTIONALLY LEFT BLANK

THIS SPACE INTENTIONALLY LEFT BLANK

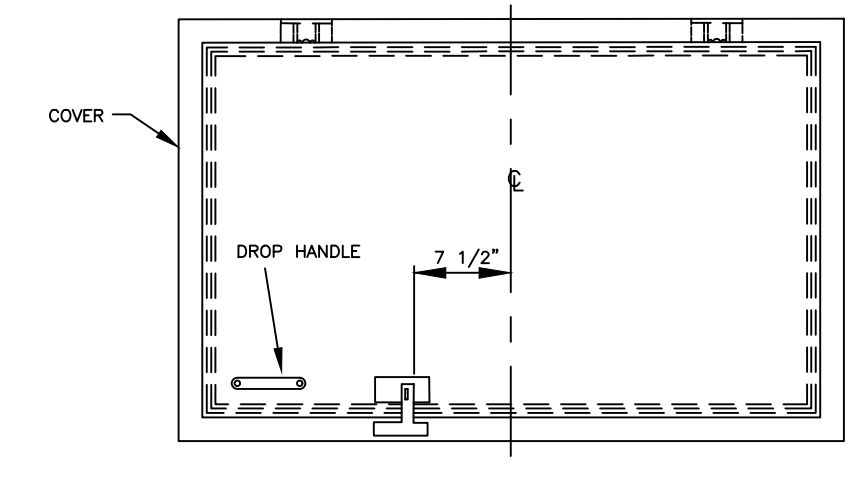
THIS SPACE INTENTIONALLY LEFT BLANK

THIS SPACE INTENTIONALLY LEFT BLANK

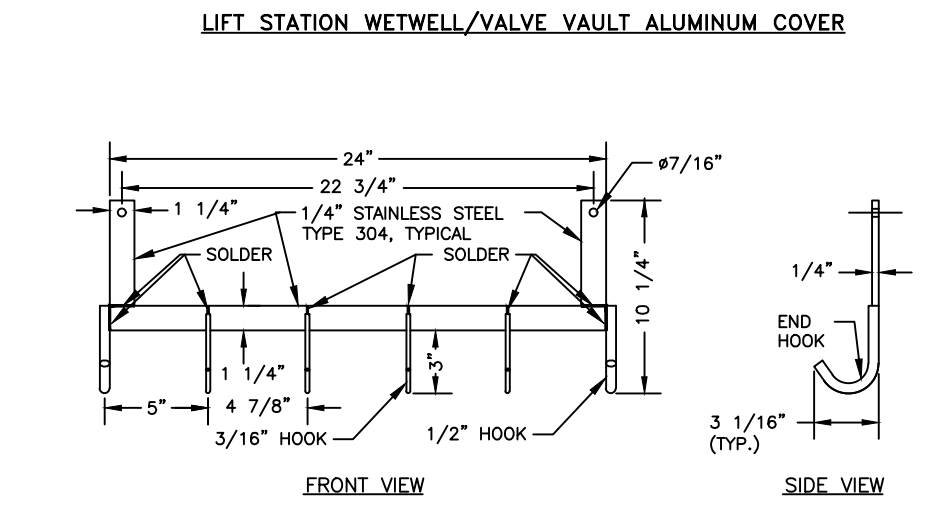


- NOTES:
1. A FIELD WELDED CAP STRIP OVER THE WETWELL/TOP SLAB JOINT IS NOT REQUIRED.
 2. THE LEVEL TRANSDUCER SHALL BE LOCATED NEAR THE CORNER OF THE ACCESS OPENING, OPPOSITE OF PUMP GUIDE RAILS AND OPPOSITE OF SEWER INFLOW INVERT. THE CONTROL WIRE SHALL BE ENCASED IN 3/4" CONDUIT SEALTITE.
 3. THE WETWELL VENT SHALL BE LOCATED OPPOSITE OF THE ACCESS GATE.

LIFT STATION TOP SLAB 50S

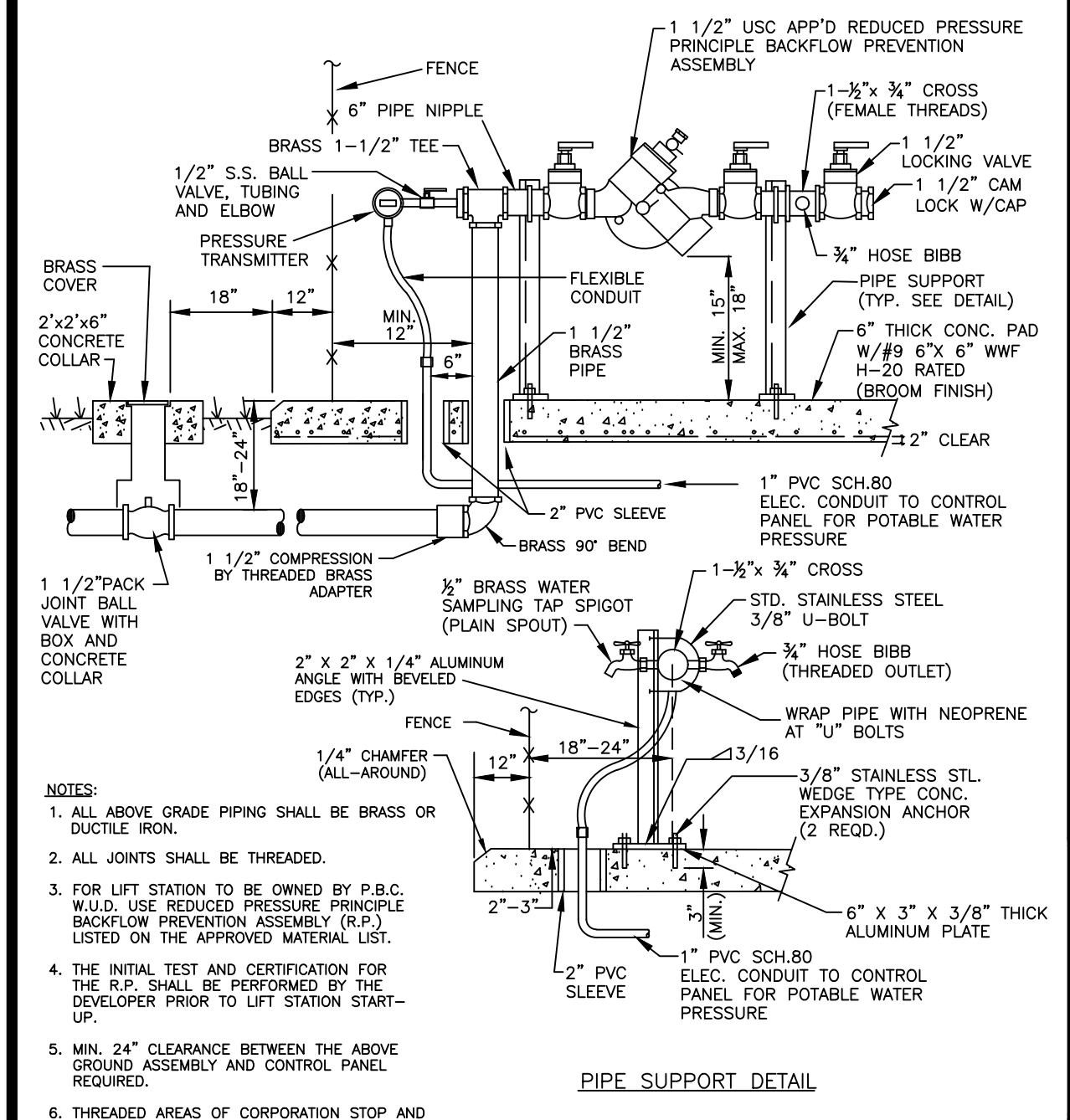


- NOTES:
1. COVER TO BE 1/4" ALUMINUM DIAMOND PLATE, HINGED, MIN. LOAD RATING 300 PSF WITH POSITIVE LOCKING ARM AND LOCKING HASP.
 2. MINIMUM COVER DIMENSIONS - 36" x 48" FOR 6" DIAMETER WETWELL AND 4"x6" VALVE VAULT.
 3. COVER SHALL BE CAST IN PLACE (SEE SPEC SHEET).
 4. SPLIT COVER IS REQUIRED FOR LARGER WETWELLS AND/OR VALVE VAULTS.
 5. RECESSED HASP IS REQUIRED.
 6. TOP AROUND COVER SHALL BE CAST TO THE SAME SIZE AS CONCRETE VALVE VAULT AND CENTERED ON VALVE ASSEMBLY.
 7. APPROVED FALL PROTECTION DEVICE IS REQUIRED FOR WET WELL OPENING. THE INSTALLATION SHALL BE PERFORMED BY THE DEVICE MANUFACTURER OR A CONTRACTOR LICENSED BY THE DEVICE MANUFACTURER.



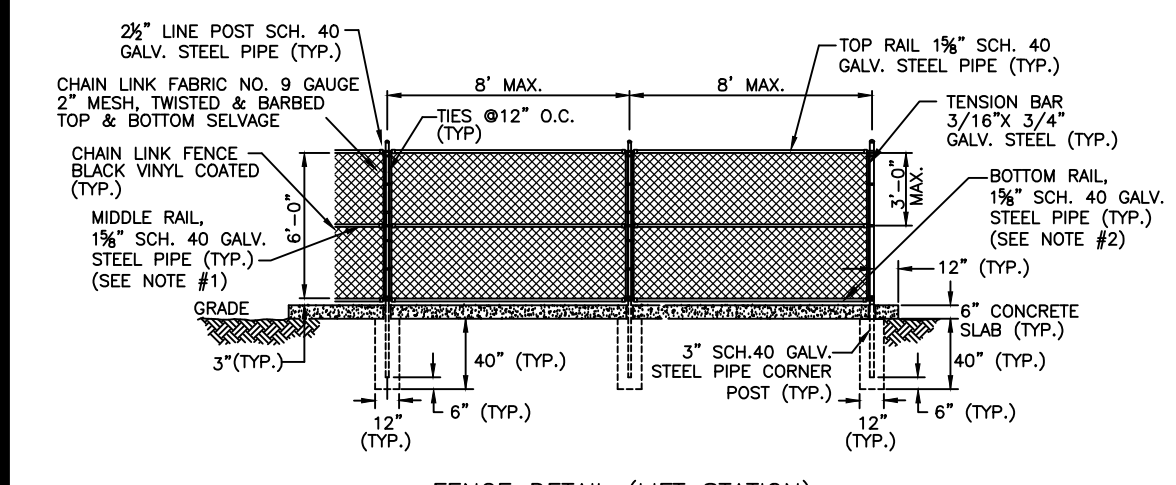
- NOTES:
1. WALL OR ACCESS FRAME MOUNTING.
 2. ALL COMPONENTS SHALL BE STAINLESS STEEL TYPE 304.
 3. TWO RACKS ARE REQUIRED FOR EACH LIFT STATION WET WELL.

LIFT STATION STANDARD ALUMINUM COVER & PUMP CABLE RACK 53S

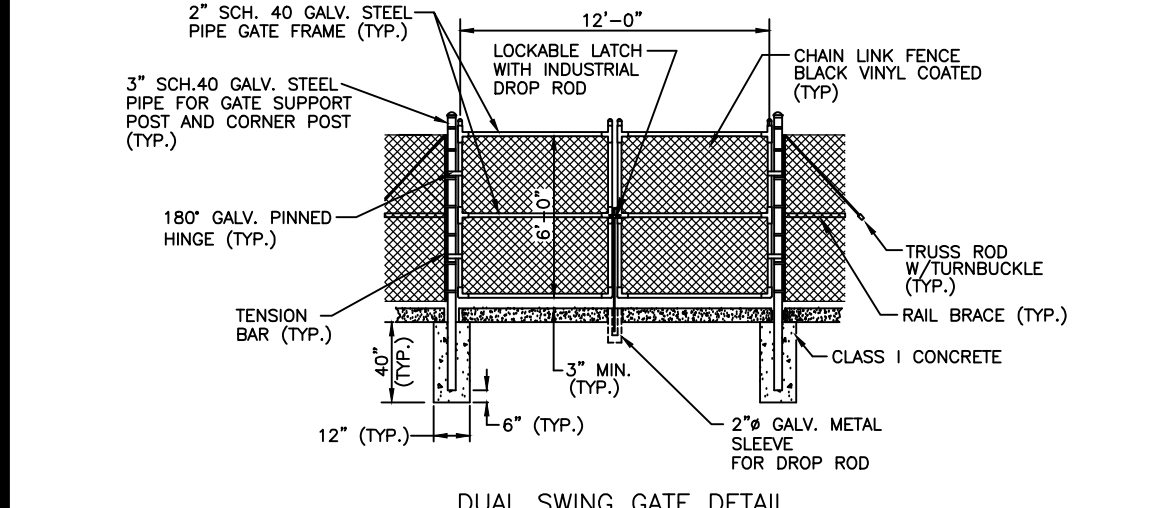


- NOTES:
1. ALL ABOVE GRADE PIPING SHALL BE BRASS OR DUCTILE IRON.
 2. ALL JOINTS SHALL BE THREADED.
 3. FOR LIFT STATION TO BE OWNED BY P.B.C. W.U.D. USE REDUCED PRESSURE PRINCIPLE BACKFLOW PREVENTION ASSEMBLY (R.P.P.) LISTED ON THE APPROVED MATERIAL LIST.
 4. THE INITIAL TEST AND CERTIFICATION FOR THE R.P.P. SHALL BE PERFORMED BY THE DEVELOPER PRIOR TO LIFT STATION START-UP.
 5. MIN. 24" CLEARANCE BETWEEN THE ABOVE GROUND ASSEMBLY AND CONTROL PANEL REQUIRED.
 6. THREADED AREAS OF CORPORATION STOP AND OTHER FITTINGS SHALL BE SPIRAL WRAPPED WITH TWO WRAPS OF TEFLON TAPE.
 7. ALL BRASS AND STAINLESS STEEL FITTINGS AND VALVES SHALL BE LEAD FREE.

HOSE CONNECTION WITH R.P. BACKFLOW PREVENTER FOR LIFT STATION WATER SERVICE 54S

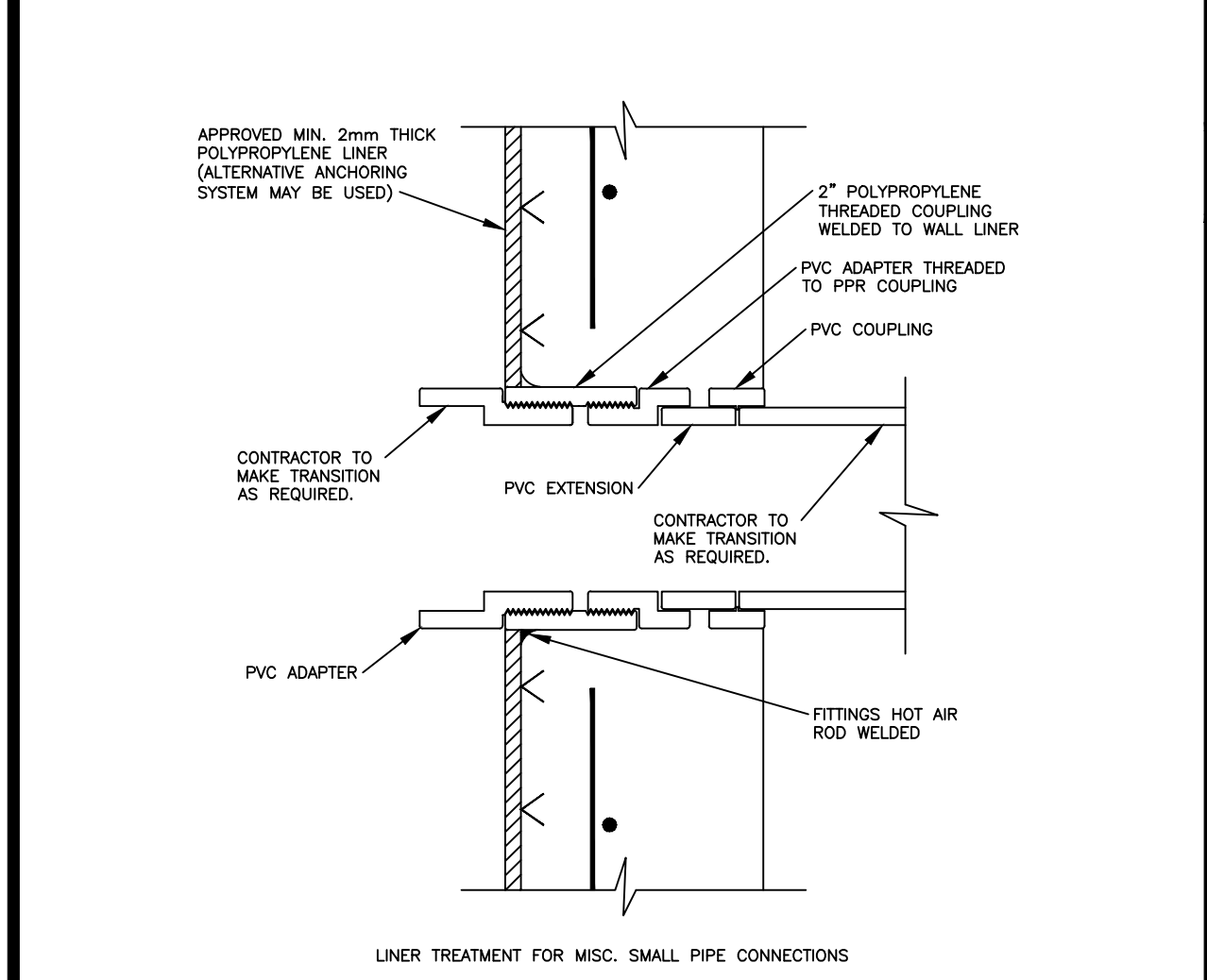


- FENCE DESIGN NOTES FOR "OTHER UTILITY FACILITIES":
1. MIDDLE RAIL REQUIRED ONLY AT CORNERS AND CHANGES OF DIRECTION.
 2. BOTTOM RAIL IS NOT REQUIRED; TENSION WIRE IS REQUIRED WOVEN THROUGH FABRIC AT MAX. 18" SPACING.



- GENERAL NOTES:
1. BLACK VINYL COATING IS REQUIRED FOR ALL FENCE FABRIC, ALL POSTS, BRACES, RAILS, AND ACCESSORIES.
 2. ALL POSTS SHALL BE CAPPED WITH GALVANIZED STEEL TOPS. LINE POST TOPS SHALL PROVIDE FOR PASSAGE OF TOP RAIL.
 3. ALL WELDED JOINTS SHALL BE COATED WITH A 2 PART EPOXY PAINT.
 4. RAIL SPLICES TO BE LOCATED WITHIN 12" OF A FENCE POST

FENCE AND GATE DETAIL 55S



LIFT STATION 2" DIAMETER CONDUIT CONNECTION 51S

LIFT STATION MECHANICAL STANDARD DETAILS, 2 OF 2

CONSULTANT:

DESIGNED BY: WUD
 DRAWN BY: M. BUCKNER
 CHECKED BY: J. LAMMERT
 APPROVED BY: WUD

Palm Beach County
 Water Utilities Department
 P.O. Box 16097
 West Palm Beach, FL 33416-6097

IT'S THE LAW !
 CALL 48 HOURS BEFORE YOU DIG
1-800-432 4770
 SUNSHINE STATE ONE CALL OF FLORIDA, INC.
 UTILITIES NOTIFICATION CENTER